

d2d IMPLANTS™

from dentists to dentists™



ASTRA COMPATIBLE

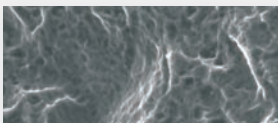
The Naturall implant is a tapered bone-level implant which can be used in one or two-stage protocols. The surgical kit is unique to Naturall due to the need to use specific tapered drills. The implants are compatible with Astra Tech Dental Implants as follows:

- Ø3.5mm NP = Astra Aqua
- Ø4.0mm RP = Astra old 4mm
- Ø4.5mm RP = Astra old 4mm
- Ø5.0mm WP = Astra Lilac

This means that Astra & Naturall abutments are interchangeable but you must use the correct screwdrivers.

Unique is the double asymmetrical threading on the implant and the synchronous micro-threads which are roughened to the top.

Blasted & etched surface roughened to the top.
18 years of data.



from NPØ3.5mm - RPØ4.0mm
- RPØ4.5mm - WPØ5.0mm



from NPØ2.8mm - RPØ3.2mm
- RPØ3.6mm - WPØ4.0mm

0.4mm supracrestal shoulder

Micro-threads which are synchronous with the main threads have a slight taper of 0.2mm by the top of the main threads

Double threading reduces both insertion time and bone overheating

Flat surface to top of the threads improves retention

Vents allow for self-tapping, reduces the possibility of de-rotation, collect bone chips and therefore limit possibility of bone compression

Asymmetrical thread increases primary stability

Rounded apical profile for easy insertion

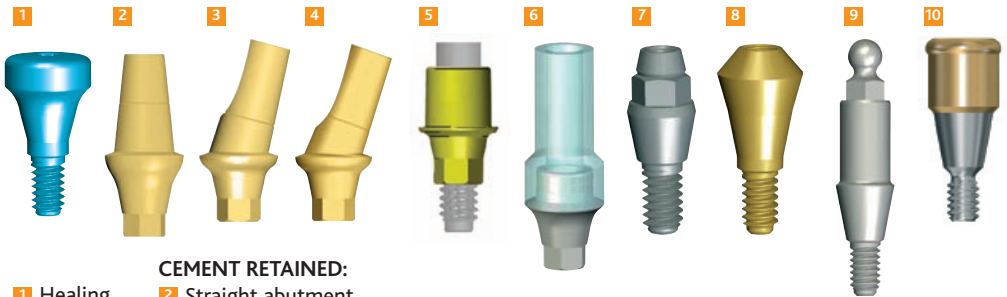
NATURALL IMPLANT SIZES

The implants are supplied with a closure or cover screw and attached to a triple function implant holder which is the fixture mount, the impression coping and a temporary abutment. (If you use it as a temporary abutment use the fixing screw Ø3.5mm = NVP35 and Ø4.0mm, Ø4.5mm & Ø4.5mm = NVP4X)

NP Ø3.5mm	RP Ø4.0mm	RP Ø4.5mm	WP Ø5.0mm
8mm	8mm	8mm	8mm
10mm	10mm	10mm	10mm
12mm	12mm	12mm	12mm
14mm	14mm	14mm	14mm

Prosthetic Solutions

A complete selection of abutments is available for cement-retained and screw-retained crowns and bridges as well as overdenture solutions



- CEMENT RETAINED:**
- 1 Healing abutment
 - 2 Straight abutment
 - 3 15° angled abutment
 - 4 20° angled abutment
 - 5 Estheti-base - unique abutment for Zirconia crowns
 - 6 Gold-palladium (cast-to) abutment

- SCREW RETAINED:**
- 7 Conhex (single or multi) abutment
 - 8 Plural (multi) abutment

- OVERDENTURE:**
- 9 Ball attachment
 - 10 Locator abutment

Our full range of implant systems



d2DIMPLANTS Ltd.
17 Brunel Park Way
Pride Park
Derby
DE24 8HR

Tel: 01332 381 203
Fax: 01332 386 556

Email: info@d2dimplants.co.uk