

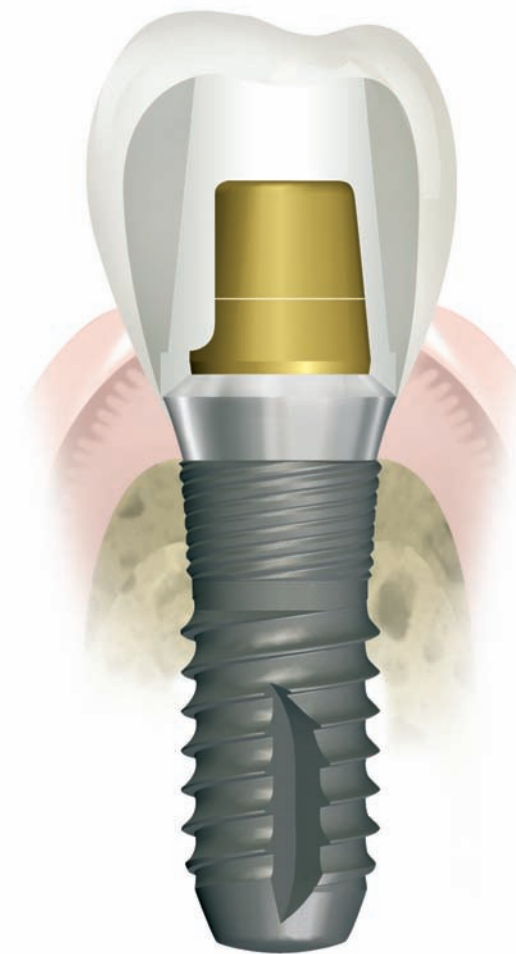
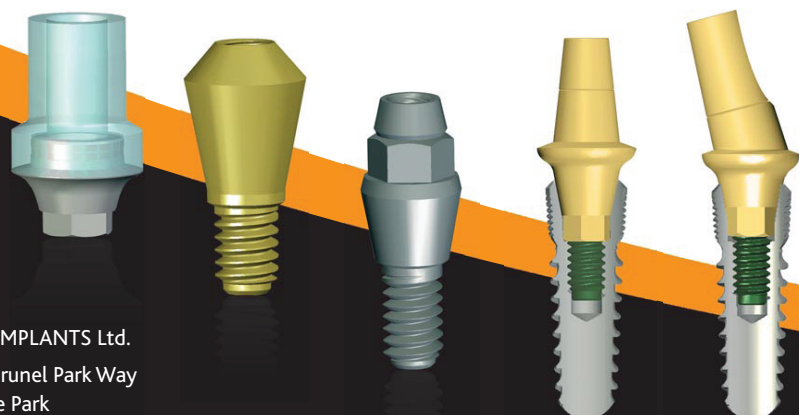
FURTHER INFORMATION

For more information on the full range of implant systems available, please contact us or visit our website www.d2dimplants.co.uk



PROSTHETICS

A complete selection of prosthetic elements are available to complement all systems.



d2dIMPLANTS Ltd.
17 Brunel Park Way
Pride Park
Derby
DE24 8HR
Tel: 01332 381 203
Fax: 01332 386 556
Email: info@d2dimplants.co.uk

www.d2dimplants.co.uk

IMPLANTS DESIGNED AND MANUFACTURED BY EUROTEKNIKA





d2dIMPLANTS is a sister company to d2dENDO started by my dental colleagues Jason Bedford and Charlie Nicholas. When in 2007 I discussed the idea of selling compatible implants to dentists and offering great value for money, it seemed only natural that we should partner with d2dENDO as they had been offering a similar service since the company launched the previous year. In addition Charlie and I work together in clinical practice and we both see and understand the implant and endo needs in specialist, general and corporate practices.

The main brand dental implant companies have not radically changed their product lines and yet they still charge high prices, justifying this by claiming high spending on R&D. Most dental implants now appear to be similar, in fact there is a convergence of design, and so I wanted to place, restore and now sell implants which are compatible to the main brands.

Our implants are compatible with Astra Tech Implants™, Straumann Dental Implant System™ and Brånemark System™, but they are priced very competitively to give great value for money.

If you would like to find out more about Naturall, Natéa, Aesthetica+, Universal or the OBI mini-implant, then email us on info@d2dimplants.co.uk or call our office on 01332 381 203.

We have partnered with eurotekника, a French company that has been manufacturing implants since 1992. They are based in Sallanches near Chamonix and are part of the large French dental group GACD. We stock their full range of implants

Since we launched at the ADI in May, we have been delighted at the response from dentists placing our fixtures and technicians working with our prosthetic range (both on our and other systems' fixtures). We therefore decided to now launch our range to all those in Britain working with implants, whether in specialist or general practice.



I look forward to hearing your feedback and meeting with you soon.

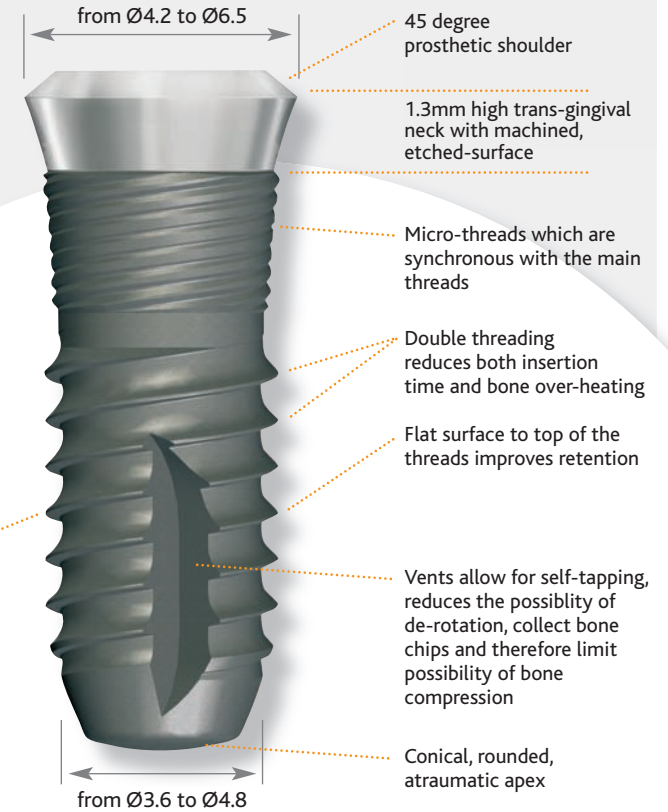
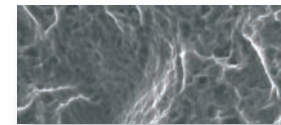
Willie Jack,
BDS (Univ Ed), DGGP (RCS Eng), MGDS (RCS Ed),
MMedSci Implantology (Univ Sheff).
Clinical Director, d2dIMPLANTS Ltd.

aesthetica

STRAUMANN COMPATIBLE

The Aesthetica+ implant is a trans-gingival implant which can be used in one or two-stage protocols. Our Ø4.8mm regular-neck and Ø6.5mm wide-neck implants are 100% compatible with Straumann abutments and vice-versa. In addition we have a unique implant platform which extends the range: the Ø4.2mm narrow-neck is available with the Ø3.6mm & Ø4.1mm implants. Most innovative is the double, asymmetrical threading on the implant and the coronal micro-threads which are roughened to the top.

- Asymmetrical thread increases primary stability
- Blasted & etched surface – 17 years of data



AESTHETICA IMPLANT SIZES

The implants are supplied with an healing abutment and an triple function implant-holder (temporary/impression coping). Do not use the screw of the implant-holder if you use it as a temporary abutment. Use the fixing screw ref. APS VF 20 93.

| Ø 3.6mm | | Ø 4.1mm | | Ø 4.8mm | |
|------------|--------------|--------------|--------------|--------------|--------------|
| Ø 4.2 Neck | Ø 4.8mm Neck | Ø 4.2mm Neck | Ø 4.8mm Neck | Ø 4.8mm Neck | Ø 6.5mm Neck |
| | | 6mm | 6mm | 6mm | 6mm |
| 8mm | 8mm | 8mm | 8mm | 8mm | 8mm |
| 10mm | 10mm | 10mm | 10mm | 10mm | 10mm |
| 12mm | 12mm | 12mm | 12mm | 12mm | 12mm |
| 14mm | 14mm | 14mm | 14mm | 14mm | 14mm |

ORDER NOW ON 01332 381 203

www.d2dimplants.co.uk email: info@d2dimplants.co.uk