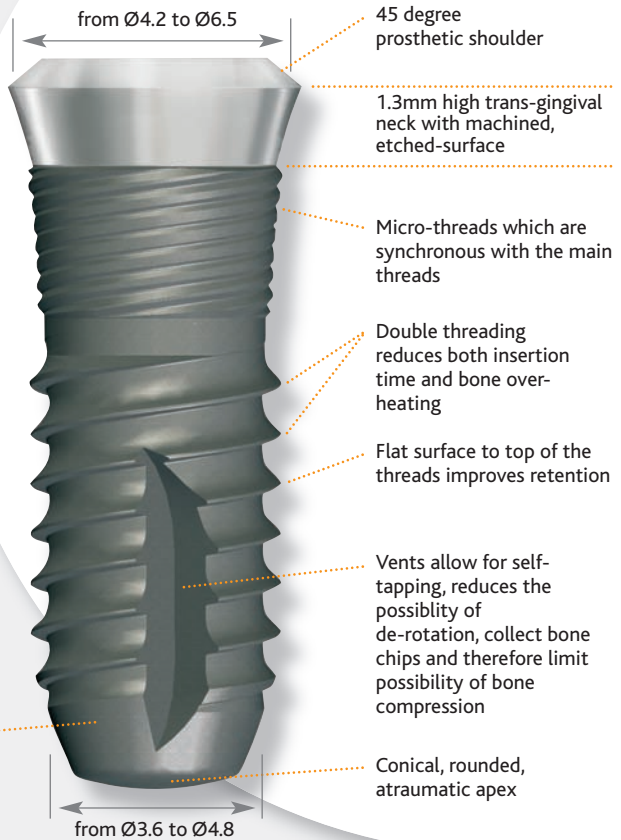
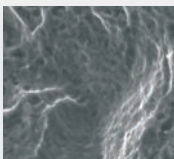


aesthetica

STRAUMANN COMPATIBLE

The Aesthetica+ implant is a trans-gingival implant which can be used in one or two-stage protocols. Our Ø4.8mm regular-neck and Ø6.5mm wide-neck implants are 100% compatible with Straumann abutments and vice-versa. In addition we have a unique implant platform which extends the range: the Ø4.2mm narrow-neck is available with the Ø3.6mm & Ø4.1mm implants. Most innovative is the double, asymmetrical threading on the implant and the coronal micro-threads which are roughened to the top.

Blasted & etched surface roughened to the top. 18 years of data.



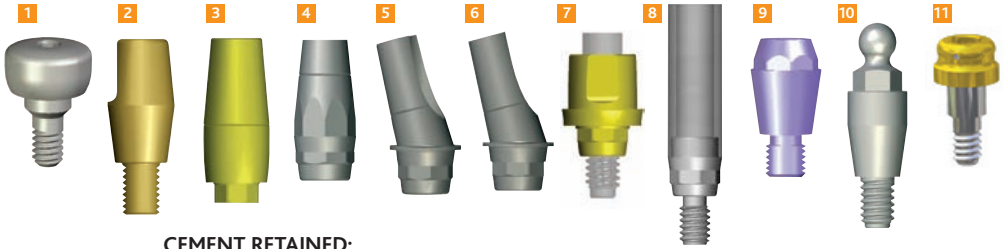
AESTHETICA+ IMPLANT SIZES

Ø3.6mm		Ø4.1mm		Ø4.8mm	
Ø 4.2 Neck	Ø 4.8mm Neck	Ø 4.2mm Neck	Ø 4.8mm Neck	Ø 4.8mm Neck	Ø 6.5mm Neck
		6mm	6mm	6mm	6mm
8mm	8mm	8mm	8mm	8mm	8mm
10mm	10mm	10mm	10mm	10mm	10mm
12mm	12mm	12mm	12mm	12mm	12mm
14mm	14mm	14mm	14mm	14mm	14mm

The implants are supplied with a healing abutment and are attached to a triple function implant holder which is the fixture mount, the impression coping and a temporary abutment (if you use it as a temporary abutment use the fixing screw ref: APS VF 20 93).

Prosthetic Solutions

A complete selection of abutments is available for cement-retained and screw-retained crowns and bridges as well as overdenture solutions



- | | | | |
|----------------------------------|--|--|---|
| <p>1 Healing abutment</p> | <p>2 Solid abutment</p> <p>3 Customizable titanium abutment</p> <p>4 Straight abutment</p> <p>5 15° angled abutment</p> <p>6 20° angled abutment</p> <p>7 Estheti-base - unique abutment for zirconia crowns</p> <p>8 Gold-palladium (cast-to) abutment</p> | <p>9 ConOcta abutment (single or multi; similar to SynOcta)</p> | <p>OVERDENTURE:</p> <p>10 Ball attachment</p> <p>11 Locator abutment</p> |
|----------------------------------|--|--|---|

Our full range of implant systems



d2DIMPLANTS Ltd.
17 Brunel Park Way
Pride Park
Derby
DE24 8HR

Tel: 01332 381 203
Fax: 01332 386 556

Email: info@d2dimplants.co.uk